



James Wattstraat 2  
3281 NK Numansdorp  
The Netherlands

+31 (0)186 - 65 21 89  
mail@deggra.com

COMPLETE HYDRAULIC SOLUTIONS | WINCHES & POWER PACKS | RENTALS | ENGINEERING PROJECTS





## SALES

Hoist winches, tugger winches, salvage winches, capstans and more. In addition to winches Dégra offers complete hydraulic solutions. Besides delivering or renting out turnkey winches and powerpack combinations, we can also advise and improve hydraulic systems. Please contact us and share your technical challenge.

## ENGINEERING

Solving technical problems! That's what we like to do. Sometimes by taking quick practical actions. For other, more advanced, technical issues our team of engineers can do more extensive technical research.

Our team is ready to tackle any technical challenge. Whether it concerns improving a hydraulic system, applying noise reduction, overhauling existing equipment or any other technical challenge. For more information contact by calling 0186 65 21 89.



## RENTAL

Get started quickly with rental equipment! Our range of rental equipment is just as wide as our product range. There are many rental options and we can provide customization of both winches and power packs. In addition to a short delivery time and customization, we can mobilize and handle winches. Using rental equipment is a great solution while working on temporary projects.

## OVERHAULING

Used equipment like new! In the past years we've done some high quality overhauling projects. A number of these projects can be found in this brochure.

Overhauling of used equipment is in many cases interesting and particularly sustainable. Overhauling also provides a change to apply new techniques on outdated equipment. Think of modern CAN-bus controls. This way existing equipment can be used as new.





# BUILDING A SUSTAINABLE FUTURE

Being a family-run business, we constantly consider the long-term implications of our decisions on both the world and future generations. To ensure a sustainable future, we actively engage in various initiatives, including:

1

## Sustainable Construction

Our commitment to durability is reflected in our construction methods, which prioritize robust and long-lasting materials. Our winches and power packs, for instance, boast extended lifespans, reducing the need for frequent replacements.

2

## Overhauling and Reuse

We champion the reuse of existing materials, demonstrating our dedication to minimizing waste. Our specialization in overhauling ensures that items can be given new life, reducing the demand for new resources.

3

## Biodegradable Oil

We are progressively shifting towards the use of biodegradable oil, a choice that not only extends the life of machinery but also prevents environmental contamination. This move aligns with our commitment to preserving the integrity of soil and water.

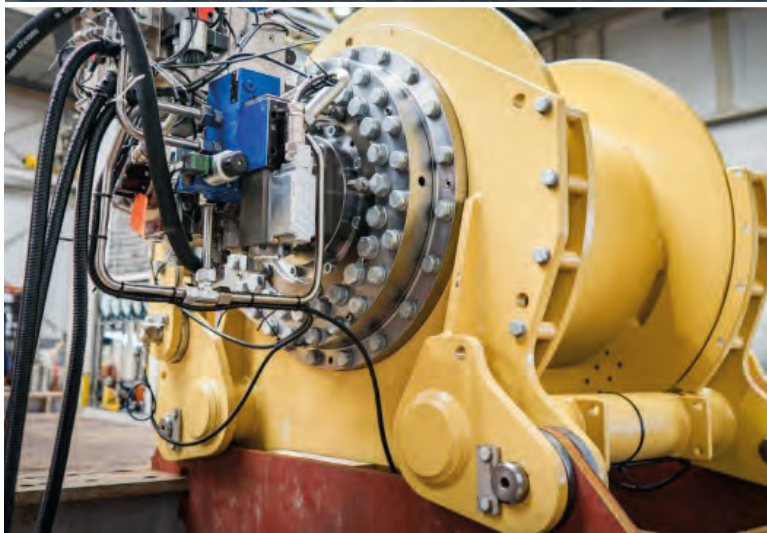
4

## Solar Energy

As early as April 2019, we have been harnessing the power of solar energy through the installation of 390 solar panels. These panels are capable of generating more than 500 kWh on sunny days, illustrating our commitment to renewable and eco-friendly energy sources.



## ENHANCING OFFSHORE WIND LIFTING OPERATIONS WITH HIGH DYNAMIC TUGGER/STEERING WINCH SYSTEM



In the offshore wind sector, precise load control is essential as components grow larger. DÉGRA, a trusted provider of (tugger) winch systems for various offshore applications, ensures load stability.

However, conventional tugger winches face limitations with increasing load size, leading to issues like slack ropes, shock loads, and potential damage. We've responded with our High Dynamic Winch, an advanced solution.

- High dynamic control of speed and line pull
- High accuracy of winch drum position
- Possibility of storage and recovery of energy
- Relatively low required installed amount of power
- Continuous stable electric power demand from the vessel Able to prevent slack rope conditions
- Precisely controllable dead band of winch pull force in constant tension mode• Single frame solutions possible, two tugger winches and control system all mounted in one frame
- Short commission times

find out more benefits on our website [www.degra.com](http://www.degra.com).





## ADVANCED SPOOLING MACHINE

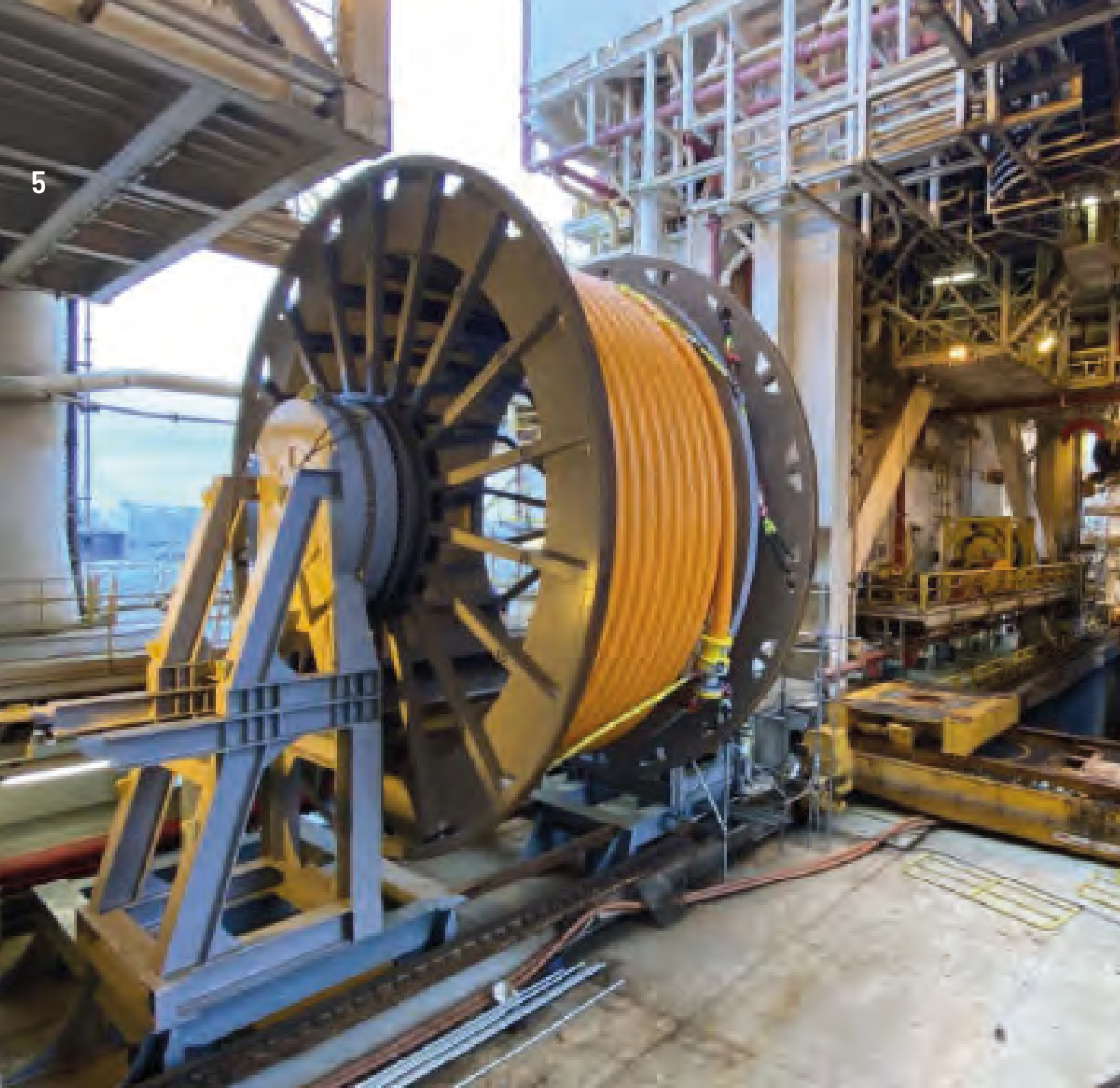
### PRECISION CONTROL & REMOTE FLEXIBILITY

The spooling machine offers adjustable pulling force and speed to meet specific needs. It includes a unique compensated constant tension system for both directions of rotation. Robust hydraulic servo control is housed in a durable stainless steel panel, simplifying control with no need for additional electronics.

#### TECHNICAL SPECIFICATIONS

- Electric power: 22 kW 400V / 50Hz
- Connector: 63A 5-P with 10 meters of cable
- Maximum torque to be delivered to the shaft: 36.000 Nm
- Maximum reel weight: 5.000 kg
- Coil length: 1.500 mm
- Coil diameter: 2.000 mm
- Fit shaft and shaft adapters for holes 60, 80 and 100 mm



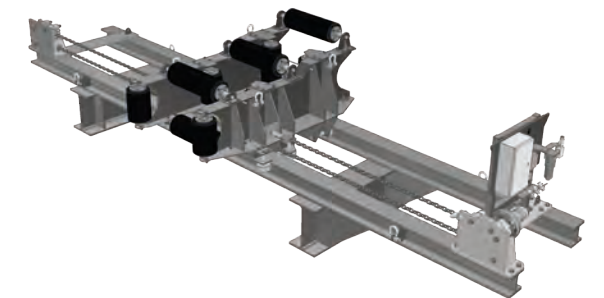


## REEL DRIVE SYSTEM DESIGN & BUILDING HIGHLIGHTS AND TECHNICAL SPECIFICATIONS

This reel drive system is designed for the controlled unwinding or winding of large, heavy reels or spools of materials such as cables, wires, hoses, or flexible pipelines. The primary function of the reel drive system is to ensure a controlled and consistent distribution of the material from the reel.

### HIGHLIGHTS AND TECHNICAL SPECIFICATIONS

- Driven and controlled hydraulically, incorporating planetary gearboxes with hydraulic disc brakes and 200 cc radial piston motors.
- Dynamic Pull (RDS): 50 kN on the second layer ( $R=3527$  mm).
- Static Holding Load (RDS): 12.5 metric tons on the second layer ( $R=3527$  mm).
- Loaded Reel Mass: 32,500 kg.
- Reel Speed: 1.5 revolutions per minute.
- Power Requirement: Approximately 45 kW.
- The support, equipped with a reel support bearing, includes a sliding skid for easy reel installation.
- Features wireless remote control for both drive and spooler operation.
- The reel drive system is designed in two or more sections, making it suitable for road transport.
- The spooler is hydraulically driven and can be manually controlled with a radio remote.







## COMPLETE REFURBISHMENT OF UMBILICAL WINCH SYSTEM

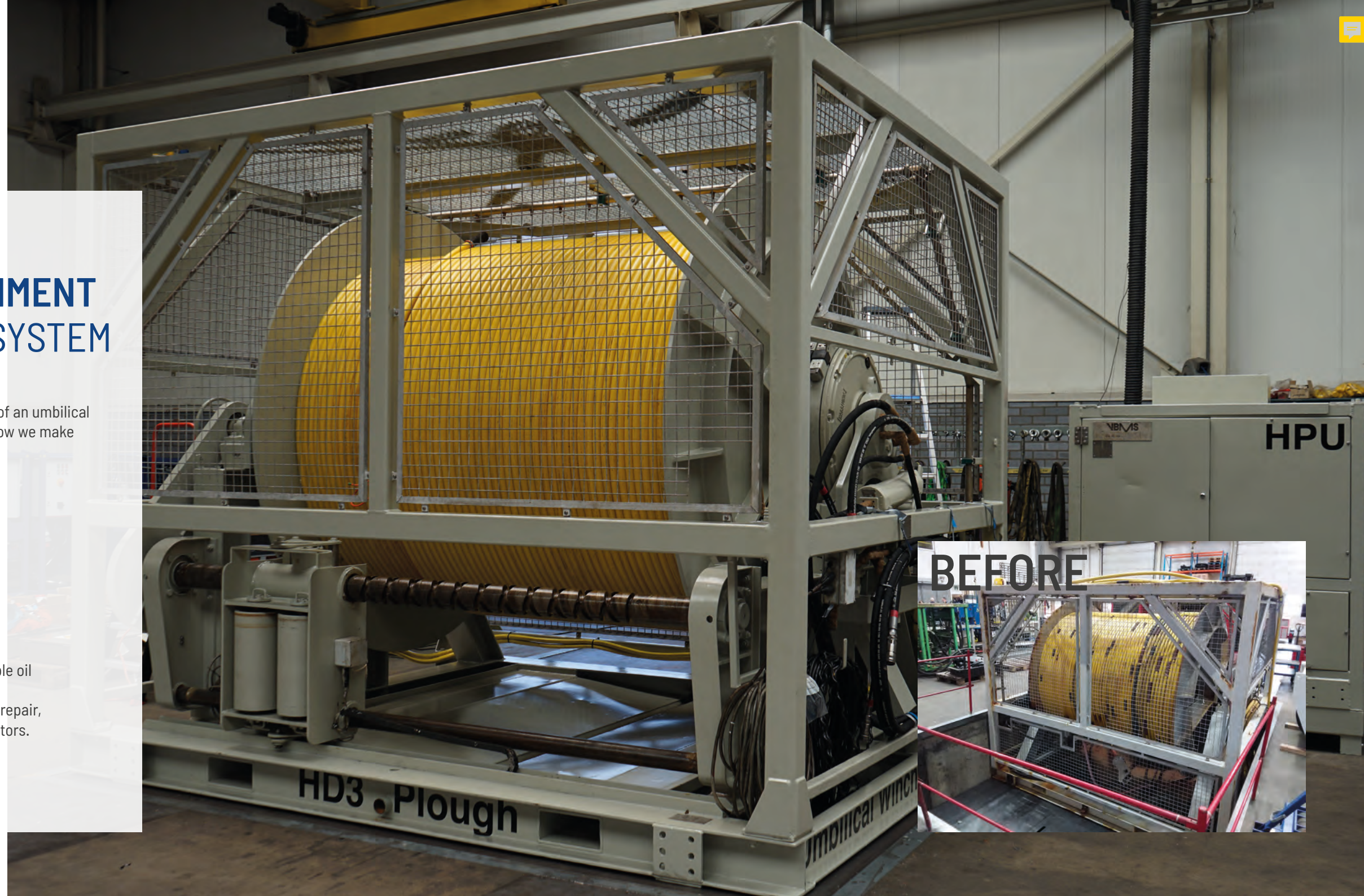
17

This year our team finished an extensive refurbishment of an umbilical winch and its associated hydraulic power pack. This is how we make existing equipment new again.

The following work is executed during the overhaul:

- Thorough cleaning with dry ice
- Disassembly of both the winch and HPU
- Replacement of all worn components
- Sandblasting and applying a protective coating
- Non-destructive testing (NDT)
- Official overhaul of the Hägglunds motor
- Functional testing
- Refilling the HPU with eco-friendly Panolin biodegradable oil

As a Bosch Rexroth service partner, we specialize in the repair, refurbishment, renewal, and adjustment of Hägglund motors.





GET TO KNOW OUR TEAM  
VISIT [WERKENBIJDEGRA.COM](https://werkenbijdeggra.com)

*Or join us for a coffee in Numansdorp*



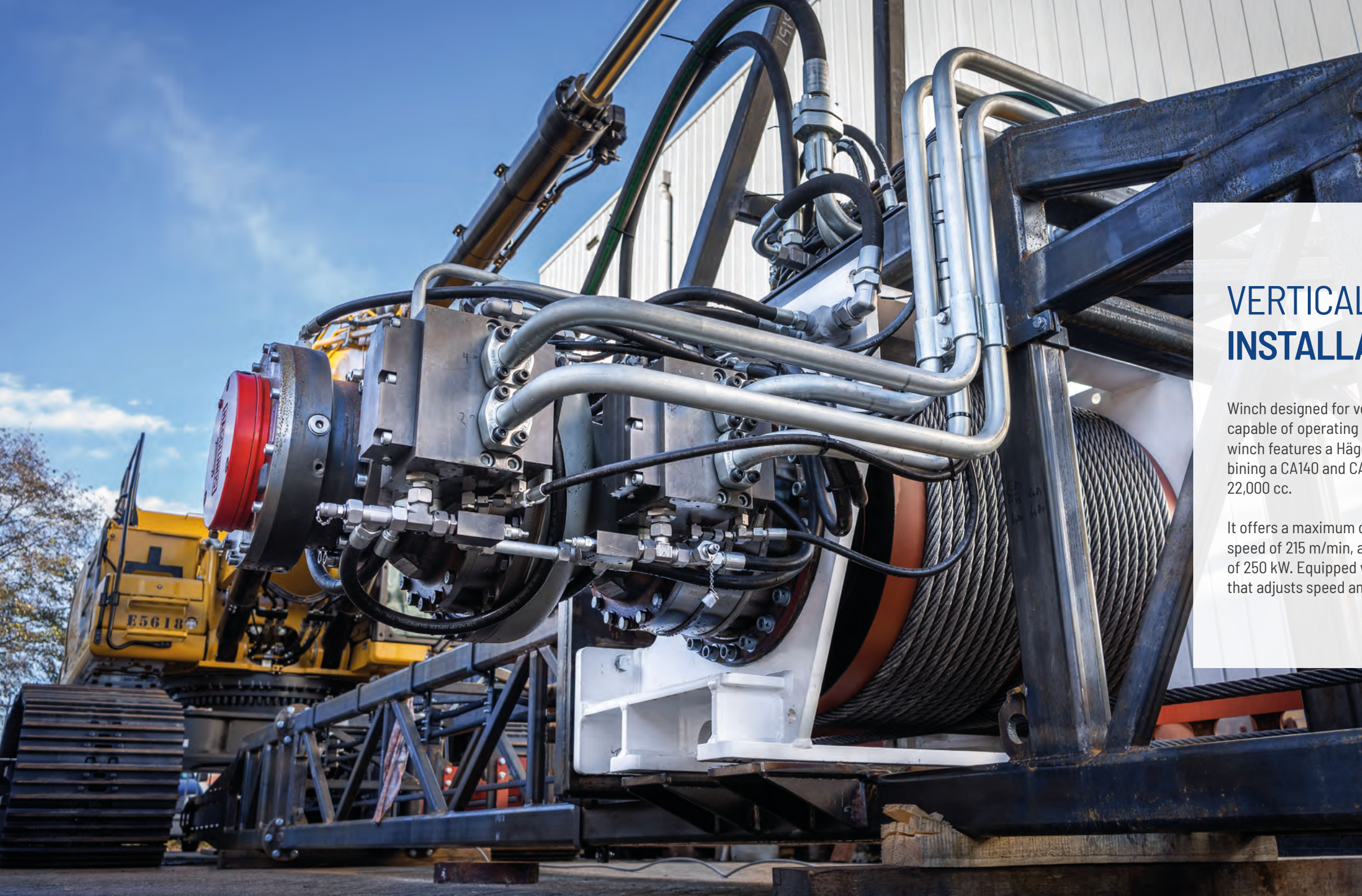


# ENHANCING CABLE CAROUSELS WITH NEW ELECTRIC HYDRAULIC POWER UNITS

We managed the entire process, from initial design to on-site installation and commissioning of two brand-new 450 kW Electric Hydraulic Power Units (EHPU) for the recently acquired carousels. Our team successfully delivered two 450 kW closed-loop electric HPUs, ensuring the seamless operation of three 9000-ton cable carousels. The Boskalis Transshelf is all set for its voyage tomorrow!







## VERTICAL DRAINAGE INSTALLATION WINCH SYSTEM

Winch designed for vertical drainage installation rigs, capable of operating at depths of up to 40 meters. The winch features a Hägglunds direct tandem drive, combining a CA140 and CA210 with a total displacement of 22,000 cc.

It offers a maximum drum line pull of 30 tons, a top line speed of 215 m/min, and a maximum power consumption of 250 kW. Equipped with a fully automatic control system that adjusts speed and line pull based on soil hardness.





# OPENDAG 2023

11 & 12 MEI







# STOCKWINCHES INFOGRAPHIC

## 35T CONSTANT TENSION WINCHES

20

Constant tension conversion kit of two existing 35 ton hydraulic mooring winches.

The kit consists of a CT manifold and servo hydraulic controls, without the need of electronics. The speed and force are simply controlled by a control knob on the winch.

Our CT modification kit is modular and suitable for a wide range of existing winch systems. Contact us for further possibilities and details.



## TMA V

Top quality from advanced technology winches. In addition to hydraulic winches with NKK, LRS, ABS winches and

+WANDFLUH&HYDROCAN

### 21 VARIOUS WINCHES

We have a standard range of winches are available in pressure roller switches, winches in stainless steel



partner of specialist in partner, maintenance and

s, Mobile we our nce and n our support can count he clear and

## ABOUT DÉGRA

DÉGRA is a family business, founded in 1977 by Jan-Piet and Jannie de Graaf. In the early years focused on customized suction dredgers, ditch machines and hydraulic systems.

DÉGRA has expanded its service to a strong team of 20 people, a hydraulic specialist able to

In addition to winches DÉGRA offers mechanical and electrical services, delivering or renting out turnkey pack combinations, we can offer hydraulic, -mechanical and

NIEUWE FOTO  
OF LOSSE FOTO'S?









T  
V  
F  
G

The  
hyc  
Th

h 2x 15t  
customer.

- 
- 
- PROJECT
- 
- SOORT
- 
- 
- 
- 

